



Rotary Club of Los Alamos

District 5520 Club 1312
chartered August 19, 1966

PO Box 853 Los Alamos, NM 87544

www.rotarylosalamos.com



The Rotary Bell

Rotary Fellowship Month

June 11, 2017

*The Four-Way Test: In the things we think, say or do:
Is it the Truth? Is it Fair to all concerned?
Will it build Good Will and Better Friendships?
Will it be Beneficial to all concerned?*

Rotary International 2016-17



Weekly Newsletter In This Issue

- This Week's Program and Other Meeting Highlights
- This Week's Announcements, Notes & Thanks

When & Where + Program & Meeting Highlights

June 13: **Vocational Field Trip** Shelly Wiemann, our Vocational Service Coordinator, has made special arrangements for us to visit



Tibbar Plasma Technologies, 274 DP Rd. -- We will meet there at **12:00** for an **on-site tour and presentation**. Light snacks will be provided; please bring your own beverage.

Notes & Announcements & Thanks

-- Thank for Attending Kiwanis Meeting: Many thanks to the **21 Rotarians** who attended the **June 6th joint meeting with Kiwanis** at the **Episcopal Church**. We all seemed to enjoy the camaraderie and the warm welcome, as well as discussing our service projects and activities.



- This Month's Club Assignments
- This Month's Programs
- This Month's Birthdays
- Current Calendar Notes
- District 5520 and Rotary Intl. News
- President's Column

Weekly Meetings

Every Tuesday at 11:45 a.m.
 The Golf Course Meeting Room
 4290 Diamond Dr.
 (Trinity Dr., right on Diamond, 2 mi.)

Board Meetings

Everyone Welcome!
 We meet the 2nd Thursday
 of the month at 4:15 p.m.
 in offices of the Los Alamos
 Daily Post, 1247 Central.

2016-2017

Club Board Members

- President: Rob Metcalf
- President-Elect: Laura Loy
- Secretary: Nancy Cerutti
- Treasurer: Ed Van Eeckhout
- Immediate Past President: Alison Pannell
- Membership: Skip King
- Public Relations: Linda Hull
- Avenues of Service: Skip King
- Rotary Foundation: Steve Ciddio
- STARS: LeAnne Parsons

Avenues of Service Chairs

- Club: Oliver Morris
- Community: Melanie Bennett
- International: Jean Gindreau
- New Generations: Alex Zubelewicz
- Vocational: Shelly Wiemann

- Newsletter Editor: Linda Hull

--Thank for Your Generous Foundation Giving! From **Tom Walker, 2016-2017 D5520 Rotary Foundation Committee Chair**: "I want to congratulate the following **24 D5520 Rotary Clubs** that, as of today (**June 8, 2017**), have achieved **\$100/capita of Annual Program Fund (APF) giving**. This is a significant achievement in any Rotary Year, but is especially noteworthy during **The Rotary Foundation's Centennial Year**. These clubs are (listed randomly): Alamogordo, East El Paso, Rio Rancho Sunrise, El Paso Sunrise, Roswell-Pecos Valley, Albuquerque Del Norte, Fort Stockton, Roswell Sunrise, Albuquerque Del Sol, Franklin Mountains-El Paso, San Juan County East, Albuquerque Metro, Las Cruces (Rio Grande), Santa Fe, Angel Fire, **Los Alamos**, Silver City, Anthony, Portales, Taos-Milagro, Carlsbad, Raton, and West El Paso." -- **Editor's note**: While the average of our donations meets the \$100 per member criteria, not every member has contributed. Of our 70+ members, only **32 gave to the Rotary Foundation in 2016-17**; our \$100-per-member average is due in large part to the **significant donations of our Paul Harris Society members** who gave **\$1000** each this year. *Extra-special thanks to them!*



-- **A Glimpse at the Ciudad Juarez Project**: Last month, **STARS** traveled to **Mexico** once again to provide **toys, toiletries, and other supplies** to the impoverished community of **Anapra**. -- The interior space of the children's community center was painted, and recreational time together included playing the guitars **Michael Erickson and Jim Nesmith** had taken on an earlier visit. -- Below: **Laura Gonzales, Jean Gindreau, Natalia Tretiak, LeAnne Parsons, and student guitarists**. (Photos by LeAnne Parsons)





Our Assistant Governor
Pat Murray of Santa Fe



Our Youth Exchange Student
Ida Mattila of Finland

Ongoing Project
LA Cares

Donations of non-perishable food and personal hygiene items are collected on the last Tuesday of the month.



Contact Us

Rotary Club of Los Alamos
PO Box 853
Los Alamos, NM 87544

Rob Metcalf, President
505-662-2358 * 505-670-8336
rob@ovinuppi.com

Nancy Cerutti, Secretary
505-672-1682
nscerutti@att.net

STARS

(Service To All Rotary Satellite)
The Rotary Satellite Club of Los Alamos
Meets 1st and 3rd Wednesdays,
5:30-6:30, VFW, 1793 Deacon
(behind CB Fox)



-- Rotary Signs in South America: Rotary friend and local potter, Gloria Gilmore-House, recently traveled to Quito, Ecuador (left) and to Puerto Baquerizo Moreno, the



capital of San Cristobal Island in the Galapagos Islands (right), where she spotted these prominent tributes to Rotary.

-- Coming Soon! Rotary's Part in LA History and Science: Our



Club has accepted an invitation to display a relevant community profile of a Los Alamos Ranch School (LARS) student in celebration of this year's 100th anniversary of the school. Over 30 businesses and organizations will be participating. The LA Historical Society and Museum have found Vernon Lathrop Pack, who

not only was a LARS student, but became a teacher and historian-- and a Rotarian. -- We have agreed to purchase a \$100, 18"x24" portrait panel of Mr. Pack, which will be delivered to us the week of July 10th, ready to display for ScienceFest on July 15th. -- The rotating exhibit in the Los Alamos History Museum that connects with these community profiles will have a soft opening on July 21st and a grand opening on September 15th. This exhibit will remain on display through the end of 2017. -- The Historical Society and Museum committee has encouraged us to leave our profile on display at the golf course while the exhibit is up in the History Museum, as they will be sending muse-um visitors to explore the profiles on display throughout the community.



-- Thanks to Our Tent Crew!: Barnum and Bailey has taken down its Big Top, but our Club's tent went up over the June 2nd weekend at San Ildefonso Pueblo for high school graduation. -- Many thanks to Paul Frederickson, Rob Metcalf,

Skip King, Jim Nesmith, Doug Wilson, and Alex Zubelewicz for their part in making this fundraiser possible. (Paul, Rob, and Alex did double-duty, setting up and taking down.)

STARS is a group of motivated Los Alamos Rotarians who are determined to fit community and international service into their busy lifestyles, while at the same time having FUN!



Melissa Metcalf, Gloria Brehm, Alex Zubelewicz, Kim Selvage, Michael Erickson, LeAnne Parsons, Laura Loy, Ian Foti-Landis, Antonya Sanders, Jim Nesmith, Colette Levine, Dawn and Mark Voss



Interact

Meets 2nd and 4th Wednesdays,
4:00-5:00,
The Teen Center



Our Club
Facebook



www.facebook.com/LosAlamosRotary
www.facebook.com/RotarySTARS
www.facebook.com/InteractLosAlamos

Club: www.losalamosrotary.com
District: www.rotary5520.org
International: www.rotary.org

Make-Up Meetings

-- Support for Dominican Republic Project: Those of you who were members during Pres. Jim Nesmith's year (2013-14) will recall that we sponsored a Rotary International Grant of \$13,000* with the Rotary Club of Rio Dulce in La Romana, the Dominican Republic (DR). This grant helped



establish a school for undocumented children (orphans) and Haitian refugee children because the DR government would not, and still will not, provide education or health care for these children. Recently, the DR has eliminated educational opportunities for children whose parents are not both native-born. Without education, these children are condemned to a life of menial, poor paying jobs, crime, and prostitution.

When the local Rotary Club provided a worn, but usable, building for the school--Fundación Chaly, named after the founding Rotarian Luis Chaly and friend of our member Dee Wilson and family--we provided toilets, sinks, a water purification system, stove, refrigerator,



housewares, computer, TV, desks, chairs--and cots, cribs, and bedding for younger siblings.

From 55 children, the school has now grown to over 150 with 150 more children expected. The Rio Dulce Club continues to assist with gas for the school bus, stipends for the teachers and aid workers, medical supplies, classroom supplies, food and other immediate needs, and has recently added another floor to the building to accommodate their expanding needs. They do not request our help often, although we have provided them with funding for a digital camera and, now, an electric generator, about \$250 each.

* Although our International Grant was funded with \$13,000, RI now requires a minimum of \$30,000. -- Alison Pannell contributed significantly to this feature; photos were provided by Luis Chaly.

-- Got Tie-Dye?: In keeping with our Club's 50th Anniversary, Pres. Rob has suggested a 1960s theme for our annual End of the Year celebration. There will be 60s music, fun and surprises, the induction of new Club officers, and awards. -- Please join us Friday, July 14th, at 5:30 for social time, followed by dinner at 6:30 at Cottonwood on the Greens. -- To make this family-friendly and affordable, Skip King and Linda Hull--in the absence of Committee Chair Melissa Metcalf, who is in Atlanta for the Rotary International Convention--



Rotary Club of Santa Fe
Thursdays, 12:00 noon
Hilton Santa Fe, 100 Sandoval

Rotary Club of Santa Fe Centro
Tuesdays, 8:00 a.m.
Chocolate Maven
821 W. San Mateo Rd.

Rotary Club of Santa Fe del Sur
Wednesdays, 12:00 p.m.
Red Lobster, 4450 Rodeo Dr.

Rotary Club of Taos Milagro
Wednesdays, 7:20 a.m.
Quality Inn
1043 Paseo del Pueblo Sur

Easy On-Line Make-Up Meetings

www.rotarymakeup.org
Info.? Frances deNuit
Rotary eClub of the Southwest USA
drfdenuit@yahoo.com
505-920-2600



On the Road?

If you are traveling anytime of the year and plan to visit a Rotary Club, please be sure to take one of our 'trade banners' with you. They are available from our Club Secretary Nancy Cerutti.

Who Am I?

I build bridges. I eradicate polio.
I mentor tomorrow's leaders.
I pump clean water.
I provide shelter to disaster victims.
I build communities.
I teach the world to read.
I create peace through service.

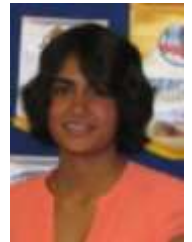
Have worked closely with **Cottonwood manager Pawel Listwan** to arrange a **Street Taco Buffet** (beef, chicken, fish; corn and wheat tortillas; calabacitas; guacamole; chips and salsa) plus iced tea, lemonade, and water. **All this for just \$10 per person; children 6 and under are free!** Pawel has waived the room fees and has incorporated other discounts, and the Club will pay a portion from money already budgeted for the year-end party. -- So, please mark your calendars for this groovy celebration!



-- **Distinguished Students of Service Say Thanks!** "Thank you for having my family and I as guests at the May 23rd Rotary Meeting. Everyone was so warm and kind, we all felt so welcome. It was a pleasure to talk with you and the other guests. And the food was delicious! -- I am honored to be recognized as one of the Rotary Club of Los Alamos' students of service. Your support and encouragement has given me the confidence to continue my endeavors with

service to our community and the communities I may find myself in the future. I am planning on moving towards involvement in the Interact Club and hope to be of service there. I really appreciate the Amazon gift card, thank you! It was such an unexpected surprise and I plan to find some fun books to read over the summer. --Thank you for your hospitality. From start to finish, the meeting was absolutely perfect! Kindest Regards, Sarah Shipley"

"Thank you so much for honoring me at the rotary meeting! I really enjoyed hearing about rotary events and I am grateful for the opportunity to increase my participation in the community. Thank you, Radhika" (Iyer)



"... thanks a ton for the award. It was truly an honor. Also, I'd never been to a Rotary meeting before, and I was amazed at how unique and interesting the meeting was. I especially liked the happy dollars and how accepting and supportive the group was as well as genuinely engaged with helping others. Rotary is awesome! Ben Rees"

Photos by Kurt Schoenberg

-- **RSVP Please: Tuesday, June 13th, 12:00 lunch meeting, Tibbar Plasma Technologies, 274 DP Rd.**

I am a Rotarian.

Order Rotary Merchandise

Russell-Hampton
www.bestclubsupplies.com
800-877-8908

National Award Services
www.clubsupplies.com
800-810-2100

Recent Exchange Students



Ida Mattila Finland 2016-2017



Markus Essl Austria
Frederiek Gerretschien The Netherlands
2014 - 2015



Krissi Wallis Germany
2015-2016



Thomas Routiaux Belgium
2013 -2014



Mille Nikolajsen Denmark
2012 - 2013



Eva Hauzar Switzerland 2011 - 2012
Samantha Hellessey Australia
Jan. '11 - Jan. '12



-- **The Envelope Please!**: As you can see, we are a **generous** Club and **support local youth** in impressive ways, giving more than **\$14,000** in awards this year! Thank you for all the ways **you** make such good work happen!



Service:
\$3,000 First Place – Erica Kevama
\$2,000 Second Place - Akane Dunn



Great Expectations:
\$3,000 Award - Christopher Rose

Vocational:
\$2,000 First Place - Cole Dalmas
\$1,000 Second Place - Enrico Zerr



Rotary-Deborah Beene Music Award:
\$1,500 First Place - Jennifer Necker
\$ 800 Second Place - Lauren Partin
\$ 500 Third Place - Theodore Warner
\$ 300 Fourth Place - Jennifer Wang

-- **Recognition for Our High School Equivalency Grant:**

Our High School Equivalency (**HSE**) grant, which was initiated in **2008** by **Rotarian Gil Butler**, has received mention online by the **Coalition on Adult Basic Education (COABE)**, which serves in partnership with the **National Council of State Directors of Adult Education**. **Dr. Jane Clements**, assistant director of the **UNM-Los Alamos Adult Basic Education program**, submitted our HSE story in a **testimonial column** prepared by COABE, whose members seek **innovative ways to serve ABE students**.



-- **Member News:**



**** Krissi Wallis**, our dear and charming **2015-16 Youth Exchange student** from **Germany**, is mourning the recent loss of **her mother** who passed away from complications of cancer. You may reach out to Krissi at: Fichtenweg 2, 14776 Brandenburg an der Havel, Germany.

Where You'll Find Our Club Support

Satellite Club (STARS--Service To All Rotary Satellite); projects in Guatemala, the Dominican Republic, and South Africa; support for the Posse Lodge, LA Cares, Boy Scouts, LAHS Hilltalkers & Robotics teams, Self-Help, Family Strengths Network, Little League, Horses for Heroes, Paws and Stripes; tutoring at the library; reading in elementary schools; LAMS 4-Way Test Essay Competition; LAHS Cookies and Conversation; Students of the Month; generous financial awards to LAHS seniors; the Deborah Beene Music Awards; grants to pay for UNM-LA GED exam fees and for Books for Babies at LAMC; Polio Plus; Sonny Brown Business Award; students to RYLA leadership camp; outbound and inbound exchange students; Group Study Exchange and Ambassadorial Scholars; blood drive; LAHS Memorial Garden; Mesa Public Library Garden; Clean-Up Los Alamos; AED for Fuller Lodge; Opera on the Rocks, picnic tables for PEEC Nature Center; Bandelier naturalization ceremony + more!

Where You'll Find Us Raising Funds

Annual Crab Fest:
last Saturday in February
Fiesta Los Alamos!:
late July or early August

**** Jane Phillips** is recovering at home now from cancer surgery on **May 30th**. -- **Linda H.** spoke with Jane last Sunday afternoon. Jane, who was walking her dog, said she did not have to stay overnight at the hospital following her surgery and is now awaiting news from her doctor later this week. -- If you'd like to send a card with good wishes or say hello, you'll find Jane at: **110 Grand Canyon, White Rock; 672-1677.**



**** Nona Bowman:** It is with great regret that I report that **Nona Bowman, former Rotarian and Los Alamos public servant,** passed away in **Los Alamos Thursday, May 18th** after falling the day before. She was 84 years old. -- **Memorial services** are scheduled for **Saturday, June 17th, 10:30 a.m.** at the **United Church.** -- She will be buried in **Virginia.**



This Month's Sgt. at Arms Rotary Minute Finemaster

June 6 (at Kiwanis)
13 (at Tibbar Plasma Technologies)
20
27

This Month's Programs



-- **June 6: Kiwanis Invitation** We have accepted a friendly invitation from the local **Kiwanis Club** to share **lunch and fellowship** with them on this Tuesday. -- Please join us at **Trinity on the Hill Episcopal Church, 3900 Trinity Dr.,** from **12:00-1:00.**

June 13: Vocational Field Trip Shelly Wiemann, our Vocational Service Coordinator, has made special arrangements for us to visit **Tibbar Plasma Technologies, 274 DP Rd.** "Our company combines the talents of plasma theorists, plasma experimentalists, engineers and technicians. Many of our employees are retirees or former employees of Los Alamos National Laboratory in Los Alamos, New Mexico. Over two years, we will be receiving **\$3.5 million in funding** from the U.S. Department of Energy's Advanced Research Projects Agency-Energy (ARPA-E) to develop our **revolutionary plasma-based electrical transformers.** The devices we develop will be shown to investors, customers, grant providers and licensees with the goal of bringing the new technology to market." -- We will meet there at **12:00** for an **on-site tour and presentation.** **Light snacks** will be provided; please bring **your own beverage.**



HOW
WONDERFUL
IT IS THAT NO ONE HAS TO WAIT,
BUT CAN START RIGHT NOW TO
GRADUALLY CHANGE THE
WORLD!

ANNE FRANK

REAL GENEROSITY
TOWARD THE FUTURE

LIES IN GIVING ALL TO
THE PRESENT.

ALBERT CAMUS

LIFE'S MOST
PERSISTENT AND
URGENT QUESTION IS,
'WHAT ARE YOU
DOING FOR OTHERS?'

Martin Luther King Jr.



-- June 20: **Hannah Littleton**, our outbound **Youth Exchange student** to **Germany**, will give a presentation about her hopes and expectations as she prepares to leave in **August**.

-- June 27: **Wayne Hardie**, friends of **Tom and Myrna McDonald**,

recently traveled with wife **Linda** to **Cuba**. -- Wayne will step to the podium to tell us about their **observations and experiences** as visitors to this **Pearl of the Antilles** just 90 miles off the **Florida coast**.



This Month's Birthdays

June 3 **Bonnie Gordon**
19 **Tom McDonald**
20 **Myrna McDonald**
22 **Doug Wilson**



Current Club Calendar Notes

Below, just a glimpse at upcoming Rotary events.
Busy!

- Tuesday, June 13: Reservations required due to limited space! **Vocational Tour to Tibbar Plasma Technologies! 12:00-1:00, 274 DP Rd., No lunch arrangements**
- Tuesday, July 11: **Yes, we will meet** even though our party falls in the same week!
- Friday, July 14: **End of the Year Party: 1960s Theme! Fun and food with friends and family! Awards, surprises! Cottonwood on the Greens, 5:30 social time; 6:30 dinner**, new Board induction, and more!
- Saturday, August 26: **¡Fiesta Los Alamos! Details coming.**

Regular Monthly Meetings



-- **Monthly Board Meeting:** Our monthly Board meeting was held **Thursday, June 1st** at **Mesa Public Library** to accommodate both **Incoming Board members and Outgoing Board members** in this transitional meeting.

-- **STARS (Service To All Rotary Satellite)** will meet the **first and third Wednesdays of the month: May 3rd and 17th** at **5:30-6:30** at the **VFW, 1793 Deacon St. (behind CB Fox).**



-- **Interact:** This community-based youth organization will meet the **second and fourth Wednesdays** of the month: **May 10th and 24th** at **4:00-5:00 p.m.** at the **Teen Center on Ashley Pond.** -- Beginning in **August**, Interact will meet at **3:20 p.m.** in the **UNM-Los Alamos Tutor Center, Building 2, Room 208; eventually, Room 203.**

-- **Updates from STARS and from Interact:**

-- **STARS: Friday-Sunday, May 19-21, STARS** traveled to **Ciudad Juarez and Anapra, Mexico**, where they distributed greatly-needed toys and toiletries and other supplies to children and families in impoverished areas these Rotarians have visited before.



-- **Interact:** **Interact President and graduating senior Faith Koh** recently shared news explaining that the Interactors are planning a **Color Run**, an **event series and 5K paint race.** **Color Runs**, are especially popular in **North America, South America, Europe, Asia, New Zealand, Australia**, and **the UAE.** The **untimed** event has **no winners or prizes**, but runners are showered with **colored powder**, made of food-grade corn starch, at stations along the run. -- Ideally, this event will be held **August 5th** as a fundraiser and marketing event. To guarantee the success of this fundraiser, Interact will meet during the summer. -- They are also selecting an **international project** which they can either implement or contribute to before **July 1st**, the end of the Interact (and Rotary) year. -- And, they have announced plans to **move their meetings** in the new school year to the **UNM-LA campus**, beginning at **3:20**, right after school. This will almost surely increase membership and attendance.

District 5520 and Rotary International News



-- **Rotary International Convention: Atlanta, June 10-14.**

Rob and Melissa Metcalf and Alison Pannell are there right now!



Rotary International Convention House of Friendship

One of the convention floors

Photos by Melissa Metcalf



Rotary Friendship Exchange (RFE)

-- From **Donna Pedace, District 5520, RFE Chair, 505-349-8850**

Already Full! (You may ask about a waiting list.) “We have another out-bound RFE opportunity to an interesting part of the world. We will send an RFE group to **India** from **Feb. 17 - 27, 2018**. Because of the nature of this trip, we are out earlier with this notice than usual to ask, who is willing to commit to going on this trip? A **visa and some travel shots** will be needed for this trip and they take time to arrange.



This trip will probably be **very popular**, so your earliest response is suggest-ed. The last RFE to

India filled within one day of the notice. Please respond by email, so we have a date and time of the response.

The **details** of the RFE that I have so far are:

- *The group will fly into Delhi on (or before if they want) Feb. 17 and overnight at a hotel at their own expense
- *The group will then fly on to Agra on the morning of Feb. 18, where they will be picked up and the RFE will begin
- *The group will fly back to Delhi (or elsewhere for additional private touring) on Feb. 26, overnight at a hotel at their own expense, and then return home or go on for other travel on Feb. 27.

This RFE visit will include: Agra, Mathura, Bareilly, Jim Corbett, and Kashi-pur, with home hosting and land transportation between hosting clubs and most meals and mineral water every day. The itinerary may change to facilitate adequate arrangements within District 3110 but “Agra” will always be included in itinerary as major attraction. Agra is the home of the famed **Taj Mahal** and if you are unsure of the other areas to be visited, please do some research about them before indicating your commitment to travel on this RFE. Side trips to other historical nearby cities like Rajasthan or Kerala may be arranged.

Will Not Include: Delhi Hotel 1st & Last night, Monument entrances, special tourist rides, personal shopping, and personal expenses. Rotarians may be asked to purchase a few meals and alcoholic drinks of their choice when eating away from host families and a few sightseeing tickets. The approximate costs will be shared in advance and will be nominal.

The group will be hosted in Rotarians homes/guest houses which will have private rooms with attached bathrooms with hot & cold water and breakfast and some other meals as per daily itinerary and activities planned for sightseeing, Rotary meetings, Rotary projects, and special events.

Indian Rotarians, despite most being vegetarian and non-alcohol drinking, have indicated they will do what they can to try to accommodate guests interest in alcoholic drinks and non-vegetarian meals like: chicken, fish, lamb, with vegetarian food too. (However, a good guest should always respect the customs and culture of their hosts and eat whatever is served or quietly eat only what is acceptable to their diet.) This may not be a good RFE for those who have special restricted diets.



As usual, the first respondents to this email will be confirmed for the trip - unless you have traveled on a recent RFE, in which case you will only be confirmed if the trip does not fill with other Rotarians. **Once you are confirmed**, you will need to send a deposit check, (made out to Rotary District 5520) for \$100 per person to hold your space. When you depart on the trip, the check will be shredded. If you change your mind late in the process and decide you do not want to go and we cannot refill the spot, the check will become a donation to the District."



Waiting List at This Time: "We have an outbound RFE available for sign-up to **New Zealand**, District 9930, that will last from **Oct. 30 - Nov. 13**. Those participating will need to plan to arrive in **Auckland, NZ**, no later than Oct. 29 and spend at least one night in a hotel at their own expense, before the RFE will begin on Oct. 30. The travelers will be returned to Auckland on Nov. 13, but will probably need to overnight again and depart for home the next day. Obviously, travelers can go earlier or stay later than the RFE, but they will need to make those extended plans on their own.

The group is limited to **six (6) couples or solo travelers**. The group will visit five (5) different locations for three (3) nights each, but I do not yet know where

those clubs will be. As usual, if you have recently traveled on an RFE, or are scheduled to travel on one before this RFE, you will be dropped to the bottom of the list. If it should not fill, then you would be eligible to join the group.

In addition to paying for your flights, some meals and some sightseeing, the group will to **split the cost** for a 12-seat van that would be used to take them around the NZ district. That total cost will be approximately \$2650 NZ money, plus the gas for the van. New Zealand, Australia, and South Africa usually charge for RFE transportation, s is nothing unique in this. But, it is an expense that every-one should be aware of in adv

There has been great interest in traveling on this particular RFE so I would encourage anyone interested to respond to me **as soon as possible** and plan to put their deposit check (made out to Rotary District 5520) for \$100 per traveler in the mail to me quickly. As usual, the check will be shredded when the travelers depart on the trip. Please **respond by email (pedaceabq@aol.com)**, so I will have the day/time recorded, as I know there are many members waiting for this RFE opportunity to arrive in their email box.

I will also be taking a **stand-by list**, so let me know if you are interested in being on that list - if you are not among the first six to respond."

If you register for this trip, please consider travel arrangements through **Los Alamos Rotarian Colette Levine**, manager of **Journey Pacific**. She may have fares to New Zealand that will **save** you money! **(505) 216-9111**, **Colette@JourneyPacific.com**, **www.JourneyPacific.com**.

The RFE information below has not been updated, but is presumed accurate.

Rotary Friendship Exchange (RFE): I'd like to "alert you that we will be sending a **return group** to visit **western Oregon and northern California** next **August 3-15**. I am **not yet taking reservations** for that trip, but I thought this could give anyone interested in joining that trip some time to think about it. Their group is coming here this coming spring, but all the hosting clubs are already set. -- We will also be hosting a group from **Australia** from



June 1-4 next year, so maybe you and your club could be thinking about whether you might like to **host that group** next summer. -- **Early 2018** we'll have another **trip to India**, for those of you who may be interested in seeing some of that fascinating country."

The President's Column: June



Dear Club,

Our club has accomplished a lot this past (Rotary) year. So much that I think that being proud is an understatement - we have done **AWESOME**. In this past couple of weeks alone we have provided for **21** high school equivalency exams (hence, 21 graduates!) and at the High School Honors Convocation we gave out **four** Deborah Beene Music Scholarships, **two** Vocational Scholarships, **two** Service Scholarships, and **one** Great Expectations Scholarship totaling over **\$14,000!** If you don't think that somewhere in all of that we just made a big difference in some young person's life then, well, your cynicism may be terminal and there is no hope. 😊

Otherwise, just thinking about it should bring a big smile to everyone's face. Truthfully, I think the really great part about all of these awards is all the participation we had from or club. The members involved with these projects did an excellent job and their choices were outstanding. If you were part of one of the committees for the scholarships or awards, thanks bunches. If you were not part of these great programs, say the word and you can be next year - that's how Rotary works.



Other than that, it's summer!!! The boys finished school this week, and my parents arrived yesterday. It's time to reacquaint myself with all my family members I have been avoiding all winter long. This is my last month and last column as President of the Club and I sincerely must say it has been an honor representing our Club for the past year.



Melissa and I will finish off the (Rotary) year in probably the best way possible, going to the Rotary International convention. To be honest, we have no specific plan to follow once we are there, but I do know from experience that there will be lots to do. I have arranged already with Linda to give a presentation about the convention sometime in August, so I will be sure to take lots and lots of photos. Until then, break out the shorts and let's enjoy the sun.

Your Happy President,



Rob Metcalf
President, 2016-17



